



## Course Location: AGC San Diego Training Center

6212 Ferris Square  
San Diego, CA 92121  
858-558-7444 | 858-731-8155 (Education Department)  
www.agcsd.org

Contact: Becca Schaffer Education Marketing Manager - bschaffer@agcsd.org

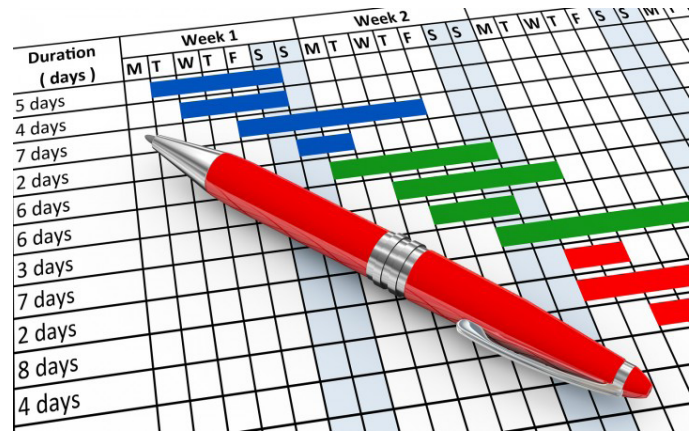
## Construction Scheduling

### A hands-on workshop for construction professionals

**Course Description:** Construction contracts require the creation and maintenance of construction schedules. Most construction projects are driven by the Critical Path Method of scheduling (CPM). This all-day workshop equips participants with the knowledge base required to understand the critical path and ultimately use the schedule as a valuable management tool. Participants will engage in an all-day, hands-on learning session that works methodically through the schedule creation and monitoring process (manually - no computer). The entire scheduling process will be discussed as the exercise develops.

#### Participants will:

- create schedule activities
- develop the logic for a construction schedule
- assign and understand relationships between activities
- assign durations
- discover the critical path
- work in a time-scaled model to:
  - engage in resource and cost loading
  - demonstrate resource leveling
  - show the effects of changes and delay
  - work with milestones
  - learn the effects of using constraints
  - learn about schedule updates



A computer solution/program for CPM scheduling will be utilized to demonstrate and reinforce the manual hands-on exercise. This IS NOT computer based training - No software is promoted



#### Upon completion participants will:

- know what the critical path is and how it is derived
- know the basic elements, steps and sequence of CPM scheduling
- Know what resource and cost loading is
- Know how to show the impacts of change and delay in a construction schedule

Target Audience: Anyone lacking basic scheduling knowledge

Presenters: Paul Stout - Power Summit

**Date:** October 17, 2018

**Time:** 8:00am - 4:00 pm

**Course Tuition:** AGC Members \$225 | Non Members \$325

**Registration:** Online Registration Must be completed [WWW.AGCSD.ORG](http://WWW.AGCSD.ORG)

**Cancellations and/or Changes Policy:** Cancellation notification must be received in writing no later than three business days prior to the scheduled course date. Substitute registrants can be named at any time. A full refund - minus a 5% processing fee if paid by credit card - will be given if notification is received by AGC San Diego three business days prior to the course start date. If a cancellation is received within the three business day time frame, or if registrant(s) elects not to attend, attendee will forfeit the entire course fee. Those participants using AGC Journeyman Trust funds must adhere to the cancellation policy. If a late cancelation or NO SHOW occurs the participating COMPANY and not the AGC Apprenticeship Trust is liable for the tuition.

**Payment:** Payment can be made online by credit card or PayPal. Master Card, Visa, Discover and American Express are accepted. Checks to be made payable to AGC San Diego. Invoice option is only available for AGC San Diego Chapter members. Full course payment must accompany each registration for all attendees at least seven days prior to the course start date. Contact Inna Alizade in Accounting for payment confirmations, refunds or receipts. [inna@agcsd.org](mailto:inna@agcsd.org)