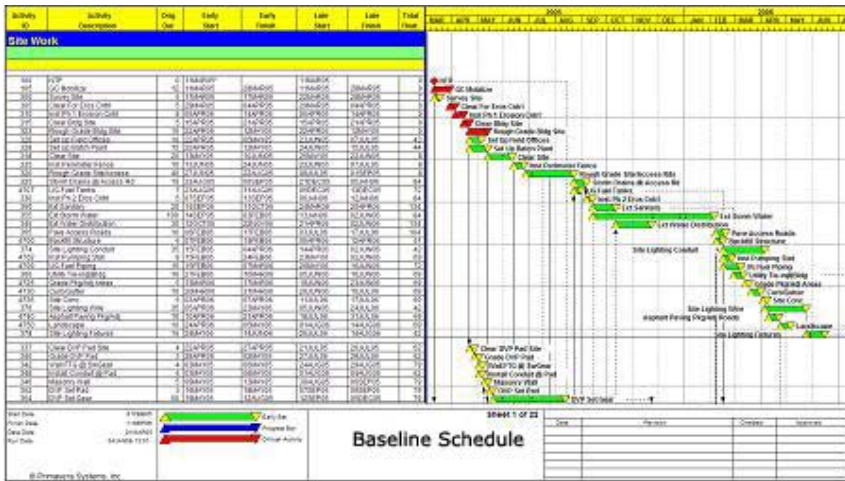




# CPM Scheduling



*What is the Critical Path?*

**Workshop Dates and Locations**

**August 12, 2009**

**AGC San Diego Training Facilities**

**6212 Ferris Square**

**San Diego CA 92121**

**858-558-7444**

**Time: 8:00am - 4:00pm**

**Price: Members \$199**

**Non Members \$279**

## All day hands-on workshop

*Learn how to:*

- Develop the logic for a construction schedule
- Find the critical path
- Evaluate various scheduling strategies
- Take full advantage of "Critical Path Method" techniques
- Create, review and implement a workable construction schedule
- Know when and how to update your schedule
- Discover the profitable edge that competent scheduling creates
- Work through the scheduling process from A to Z
- Discover the mechanics behind computer generated charts

*Most projects are driven by the CPM schedule*

*This all-day workshop equips participants with the knowledge base required to use the CPM schedule as their most valuable management tool*

Who should attend this workshop?

- Project Managers Construction Managers
- Project Engineers Project Estimators
- Project Executives Project Administrators
- Design Professionals

*Equally Beneficial to Generals, Subs and Design Professionals*

**REGISTER ONLINE AT**  
**[www.agcsd.org](http://www.agcsd.org)**



**Instructor: Paul Stout** LEED AP

*Estimating, Project Management, Prevailing Wage, LEED AP*

Paul Stout is a construction project manager, estimator and construction seminar instructor, bringing more than twenty five years of practical, hands-on construction experience into the seminar / workshop and consulting arena. From Laborer to Project Manager, Paul advanced through the ranks to learn the industry from the inside out. He was a crew Foreman or Project Superintendent for five years, an Estimator for more than five years and a Project Manager for more than ten years. Paul has managed projects from the position of both Subcontractor and Prime Contractor. Paul has written, produced and presented many components for Certificate Series Programs for Foremen, Project Managers, Estimators, and Project Engineers. Since the year 2000, Paul has conducted 14 construction project management software training sessions and presented hundreds of seminars and workshops in 60 US cities, spanning 22 states.

